



G K ELECTRICALS

DELIVERS QUALITY WORK

PRODUCT CATLOUGE

Regd Off: No.62/1, Vamsee Residency,
Neraluru, Anekal Taluk, Bangalore,562107
gkelectricals50@gkelectricals50.com

+91 7892832120

+91 8073273947

Table of Contents

01	COVER PAGE
02	TABLE OF CONTENTS
03	COPPER TUBULAR LUGS
04	COPPER RING INSULATED TYPE TERMINAL
05	END SEALING FERRULES INSULATED AS PER DIN-46228
06	P-CLAMPS
07	C-CLAMPS
08	COPPER BRAID, COPPER WIRE BRAIDED STRIP WITH LUGS FITTINGS, COPPER BRAIDED WIRE ROPE WITH LUGS FITTINGS
09	LAMINATED COPPER FLEXIBLES
10	VIBRATION-DAMPENING, HEAVY SERIES, TWIN SERIES, HEAVY-4 SERIES PIPE CLAMP
11	PIPE CLAMP

G K ELECTRICALS

DELIVERS QUALITY WORK

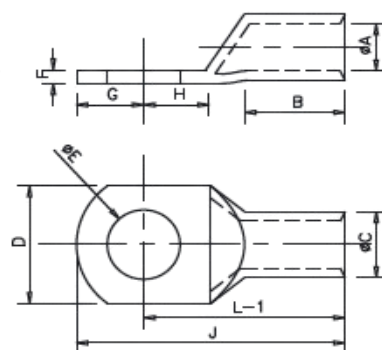
COPPER TUBULAR LUGS

Available wire range : IEC standard cables

Material : High Conductivity copper per 99.9% up with Electro-Tin Plated.

Conductors as per IEC 60228

Voltage Rating: According to IEC61238-1 up to 30kv (Um 36kv)



Size mm ²	E	A	C	D	F	B	G	H	L-1	J	GKE NO
6	5.2	3.8	5.5	10	1.2	9	5	6	18	23	GK006-5
6	6.5	3.8	5.5	12	1	9	6	9	21	27	GK006-6
6	8.4	3.8	5.5	12	1	9	6	9	21	27	GK006-8
10	6.5	4.5	5.6	12	1.2	9	6	7	19	25	GK010-6
10	8.4	4.5	6.2	12	1.2	9	6	9	21	27	GK010-8
16	6.4	5.4	7.1	12	1.4	12	7	7	23	30	GK016-6
16	8.4	5.4	7.1	12	1.4	12	7	9	25	32	GK016-8
25	6.5	6.8	8.8	13	2	12	7	7	23	30	GK025-6
25	8.4	6.8	8.8	18	1.4	12	10	11	27	37	GK025-8
25	10.5	6.8	8.8	18	1.4	12	10	11	27	37	GK025-10
25	12.5	6.8	8.8	18	1.4	12	10	11	27	37	GK025-12
35	6.5	8.2	10.6	15	2.4	12	9	9	26	35	GK035-6
35	8.4	8.2	10.6	15	2.4	12	9	9	26	35	GK035-8
35	10.5	8.2	10.6	18	2	12	10	11	28	38	GK035-10
50	8.4	9.5	12.4	18	2.9	16	10	11	33	43	GK050-8
50	10.5	9.5	12.4	18	2.9	16	10	11	33	43	GK050-10
70	8.4	11.2	14.7	21	3.5	18	12	12	38	50	GK070-8
70	10.5	11.2	14.7	21	3.5	18	12	12	38	50	GK070-10
70	13	11.2	14.7	21	3.5	18	12	12	38	50	GK070-12
95	10.5	13.5	17.4	25	3.9	20	13	13	42	55	GK095-10
95	13	13.5	17.4	25	3.9	20	13	13	42	55	GK095-13
120	10.5	15	19.4	28	4.4	22	14	14	46	60	GK120-10
120	13	15	19.4	28	4.4	22	16	16	48	64	GK120-12
150	10.5	16.5	21.2	30	4.7	26	16	16	53	69	GK150-10
150	13	16.5	21.2	30	4.7	26	16	16	53	69	GK150-12
185	13	18.5	23.5	34	5	32	17	17	61	78	GK185-13
185	17	18.5	23.5	34	5	32	17	17	61	78	GK185-17
240	17	21	26.5	38	5.5	38	20	20	72	92	GK240-17
240	21	21	26.5	38	5.5	38	20	20	72	92	GK240-21

G K ELECTRICALS

DELIVERS QUALITY WORK

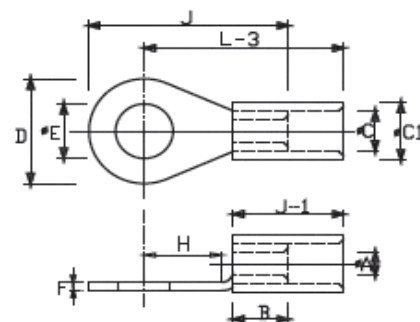
COPPER RING INSULATED TYPE TERMINAL

Material: Copper per 99.9% up with Electro-Tin Plated.

Insulation : Polyamid

Dimension is according to DIN 46228-4

Fire safety standard : UL94 V0



Size mm ²	E	A	C	D	F	B	H	J	J-1	L-3	C-1	GKE NO
1.5	2.5	1.6	3.2	6	0.8	5	4	14	10	16	4.8	GR0015-2
1.5	3.2	1.6	3.2	6	0.8	5	4	14	10	16	4.8	GR0015-3
1.5	4.2	1.6	3.2	6	0.8	5	4	14	10	16	4.8	GR0015-4
1.5	5.2	1.6	3.2	10	0.8	5	6	18	10	18	4.8	GR0015-5
1.5	6.4	1.6	3.2	10	0.8	5	6	18	10	18	4.8	GR0015-6
1.5	8.2	1.6	3.2	10	0.8	5	6	18	10	18	4.8	GR0015-8
2.5	3.5	2.3	3.9	6.5	0.8	5	3.5	12.7	10	14.5	5.5	GR0025-3
2.5	4.2	2.3	3.9	8	0.8	5	5	16	10	14.5	5.5	GR0025-4
2.5	5.2	2.3	3.9	8	0.8	5	5	16	10	17	5.5	GR0025-5
2.5	6.4	2.3	3.9	10	0.8	5	7	18	10	17	5.5	GR0025-6
2.5	7.2	2.3	3.9	12	0.8	5	9	22	10	18	5.5	GR0025-7
2.5	8.2	2.3	3.9	12	0.8	5	9	22	10	21	5.5	GR0025-8
2.5	10.2	2.3	3.9	16	0.8	5	10	25	10	22	5.5	GR0025-10
2.5	12.7	2.3	3.9	18	0.8	5	14	29	10	25	5.5	GR0025-12
4.6	5.2	3.5	5.5	10	1	6	5	19	14	22	7.1	GR0046-5
4.6	6.4	4.3	5.5	12	1	6	6	20	14	22	7.1	GR0046-6
4.6	8.2	3.5	5.5	12	1	6	6	20	14	22	7.2	GR0046-8

Note: Plastic raw material compliant with EN 45545-2 HL3 requirements.



G K ELECTRICALS

DELIVERS QUALITY WORK

END SEALING FERRULES

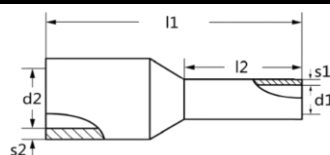
INSULATED AS PER DIN-46228

Material : Copper per 99.9% up with Electro-Tin Plated.

Insulation : Polyamid

Dimension is according to DIN 46228-4

Fire safety standard : UL94 V0



Size Sq mm2	l1	l2	s1	s2	d1	d2	Colours			Part No
0.34	11	6	0.15	0.3	0.8	1.9	PINK	TURQUOISE	TURQUOISE	E0306
	13	8								E0308
0.5	12	6	0.15	0.3	1.0	2.6	WHITE	ORANGE	WHITE	E0506
	14	8								E0508
	16	10								E0510
	18	12								E0512
0.75	12	6	0.15	0.3	1.2	2.8	BLUE	WHITE	GREY	E7506
	14	8								E7508
	16	10								E7510
	18	12								E7512
1.0	12	6	0.15	0.3	1.4	3.0	RED	YELLOW	RED	E1006
	14	8								E1008
	16	10								E1010
	18	12								E1012
1.5	14.5	8	0.15	0.3	1.7	3.5	BLACK	RED	BLACK	E1508
	16.5	10								E1510
	18.5	12								E1512
	24.5	18								E1518
2.5	15.5	8	0.15	0.3	2.3	4.0	GREY	BLUE	BLUE	E1508
	17.5	10								E1510
	19.5	12								E1512
	25.5	18								E1518
4.0	16.5	9	0.2	0.8	2.8	4.5	ORANGE	GREY	GREY	E4009
	17.5	10								E4010
	19.5	12								E4012
	25.5	18								E4018
6.0	20	10	0.2	0.4	3.5	6.0	GREEN	BLACK	YELLOW	E6010
	22	12								E6012
	28	18								E6018
10.0	22	12	0.2	0.5	4.5	7.6	BROWN	IVORY	RED	E10-12
	28	18								E10-18
16.0	22	12	0.2	0.5	5.8	8.7	IVORY	GREEN	BLUE	E16-12
	28	18								E16-18
25.0	28	16	0.2	0.5	7.5	11	BLACK	BROWN	YELLOW	E25-16
	30	18								E25-18
	34	22								E25-22
35.0	30	16	0.2	0.5	8.3	12.5	RED	BEIGE	RED	E35-16
	32	18								E35-18
	39	25								E35-25
50.0	36	20	0.3	0.5	10.3	15	BLUE	OLIVE	BLUE	E50-20
	41	25								E50-25
70.0	37	20	0.4	0.5	13.5	16	YELLOW	YELLOW	YELLOW	E70-20
	42	27								E70-27
95.0	44	25	0.4	0.8	14.5	18	RED	RED	RED	E95-25
120.0	47.6	27	0.45	0.8	16.05	20.03	BLUE	BLUE	BLUE	E120-27
150.0	53	32	0.5	1.0	19.06	23.04	YELLOW	YELLOW	YELLOW	E150-32

Note: Plastic raw material compliant with EN 45545-2 HL3 requirements.



G K ELECTRICALS

DELIVERS QUALITY WORK

P-CLAMPS

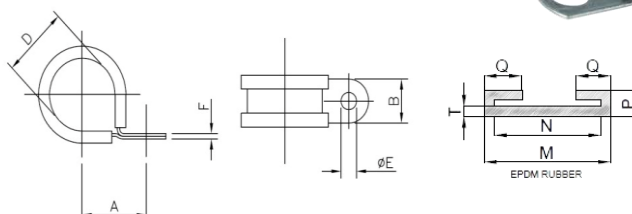
"P" style clamp used for mounting a multitude of light duty applications including cables, pneumatic lines, and conduit.

Material : SS 316

Galvanized Steel with Elastomer Profile (EPDM), halogen-free.

Dimension is according to DIN 46228-4

Fire safety standard : UL94 V0



SI No	Part No	Dimensions (mm)					EPDM RUBBER				
		D	A	B	E	F	M	N	P	Q	T
1	DIN1597-6-P66	6	14	15.6	8.5	1	19	16	5.5	5.5	1.5
2	DIN1597-8-P66	8	15	15.6	8.5	1	19	16	5.5	5.5	1.5
3	DIN1597-10-P66	10	16	15.6	8.5	1	19	16	5.5	5.5	1.5
4	DIN1597-14-P66	14	18	15.6	8.5	1	19	16	5.5	5.5	1.5
5	DIN1597-16-P66	16	19	15.6	8.5	1	19	16	5.5	5.5	1.5
6	DIN1597-18-P66	18	20	15.6	8.5	1	19	16	5.5	5.5	1.5
7	DIN1597-20-P66	20	21	15.6	8.5	1	19	16	5.5	5.5	1.5
8	DIN1597-22-P66	22	25.5	15.6	8.5	1	19	16	5.5	5.5	1.5
9	DIN1597-24-P66	24	26.5	15.6	8.5	1	19	16	5.5	5.5	1.5
10	DIN1597-26-P66	26	27.5	15.6	8.5	1	19	16	5.5	5.5	1.5
11	DIN1597-28-P66	28	28.5	15.6	8.5	1	19	16	5.5	5.5	1.5
12	DIN1597-30-P66	30	29.5	15.6	8.5	1	19	16	5.5	5.5	1.5
13	DIN1597-32-P66	32	30.5	15.6	8.5	1	19	16	5.5	5.5	1.5
14	DIN1597-36-P66	36	32.5	15.6	8.5	1	22	16	8	6	3
15	DIN1597-40-P66	40	34.5	15.6	8.5	1	22	16	8	6	3
16	DIN1597-45-P66	45	37	15.6	8.5	1	22	16	8	6	3
17	DIN1597-50-P66	50	39.5	15.6	8.5	1	22	16	8	6	3

Note: Plastic raw material compliant with EN 45545-2 HL3 requirements.

G K ELECTRICALS

DELIVERS QUALITY WORK

C-CLAMPS

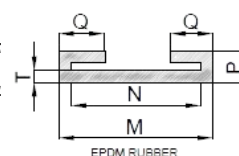
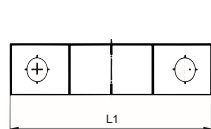
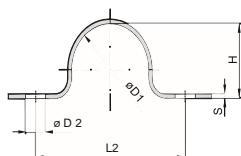
"P" style clamp used for mounting a multitude of light duty applications including cables, pneumatic lines, and conduit.

Material : SS 316

Galvanized Steel with Elastomer Profile (EPDM), halogen-free.

Dimension is according to DIN 46228-4

Fire safety standard : UL94 V0



SI No	Part No	Ø D1	Dimensions (mm)				EPDM RUBBER						
			L1	L2	H	D2	B	S	M	N	P	Q	T
1	DIN1597-8-W66	8	44	28	5	5.5	16	1.5	19	16	4.5	4.5	1.5
2	DIN1597-10-W66	10	48	32	6	5.5	16	1.5	19	16	4.5	4.5	1.5
3	DIN1597-12-W66	12	52	36	9	5.5	16	1.5	19	16	4.5	4.5	1.5
4	DIN1597-18-W66	18	60	44	15	5.5	16	1.5	19	16	4.5	4.5	1.5
5	DIN1597-22-W66	22	76	56	19	6.6	20	2	23	20	5	5	1.5
6	DIN1597-28-W66	28	84	64	24	6.6	20	2	23	20	5	5	3
7	DIN1597-32-W66	32	92	72	29	6.6	20	2	23	20	5	5	3
8	DIN1597-38-W66	38	108	84	34	9	25	3	28	25	6	6	3
9	DIN1597-42-W66	42	112	88	38	9	25	3	28	25	6	6	3
10	DIN1597-48-W66	48	118	90	44	11	30	3	33	30	6	6	3
11	DIN1597-52-W66	52	134	106	47	11	30	3	33	30	6	6	3

Note: Plastic raw material compliant with EN 45545-2 HL3 requirements.

G K ELECTRICALS

DELIVERS QUALITY WORK

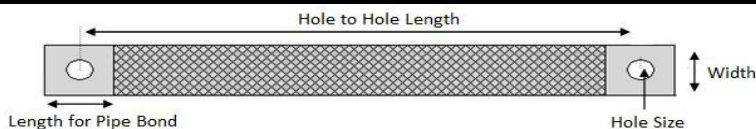
COPPER BRAID

Copper Material: Electrolytic Copper

Finish Offers: Bare Copper, Tinned Plated, Silver Plated

Wire Sizes Offer – From 30 swg to 45 swg. Standard is

36 swg (0.2mm) Cross Sectional Area Range: From 1.5 Sqmm and Above



The Copper Braid with Pipe Bond is Customized Design and we manufacture as per Customers Specification depending on their Current rating and Cross Sectional Requirement. OR

Our Customers need to give following Information in order to submit the Quote for any inquiry:

- 1) Copper Braid Width (Width)
- 2) Hole to Hole Length
- 3) Length for Pipe Bond (Normally it's the same of Width)
- 4) Thickness of Copper Braid
- 5) Hole Size
- 6) Wire Diameter (Usually its Manufactured in 36 Swg (Gauge))

Copper Wire Braided Strip with Lugs Fittings

Copper Material: Electrolytic Copper

Finish Offers: Bare Copper & Tinned Plated

Wire Sizes Offer – From 30 swg to 45 swg. Standard is 36 swg (0.2mm)



The Copper Braid with Copper Lugs Bond is Customized Design and we manufacture as per Customers Specification depending on their Current rating and Cross Sectional Requirement.

OR

Our Customers need to give following Information in order to submit the Quote for any inquiry:

- 1) Total Width of the Copper Braid
- 2) Hole to Hole Length
- 3) Cable Lugs Size
- 4) Thickness of Copper Braid
- 5) Hole Size
- 6) Wire Diameter (Usually its Manufactured in 36 Swg (Gauge))

Copper Braided Wire Rope with Lugs Fittings

Copper Material: Electrolytic Copper

Finish Offers: Bare Copper & Tinned Plated

Wire Sizes Offer – From 30 swg to 45 swg. Standard is 36 swg (0.2mm)



The Copper Braided Rope with Copper Lugs Bond is Customized Design and we manufacture as per Customers Specification depending on their Current rating and Cross Sectional Requirement.

G K ELECTRICALS

DELIVERS QUALITY WORK

Laminated Copper Flexibles

Copper Material: Electrolytic Copper

We offer the finest quality Laminated Copper Flexible Connectors that are manufactured by stacking several foils of electrolytic copper and then applying high current under high pressure. These types of flexible connectors are commonly used as the flexible expansion joints for connecting the bus bars in different applications.



Features:

- Endurable and Long Lasting
- Available in different sizes
- Easy to use Industry Use:
- Switchgear industries
- Power plants
- Cathodic Protection
- Bus Ducts
- Transformer
- V.C.B.
- Resistance welding engineering
- Electric Locomotives
- Galvano Engineering
- Furnaces

These Laminated Copper Flexible Connections are produced from high conductivity electrolytic grade copper foils/sheets. We follow various methods to produce these flexible jumpers.

The method used is described below:

Press Welding

In Press welding, individual Copper strips are fused (one homogeneous mass) together by applying direct current and pressure without the use of any foreign material. It results in producing a solid palm with properties of a plain bulbar of the same cross section. This method assures minimum resistance thus increasing the product life & reduction in downtime. Welding provides the best mechanical & electrical properties at high temperatures. These are available in all sizes covering the desired cross section area. Slotted holes can be provided up on request.

Copper laminated flexible Connectors

consist of several stacked strips with riveted or welded contact areas. They have a constant cross-section over the whole length. Bus bars and laminated connectors with the same cross-section can be loaded with the same current. A part of laminated connectors are utilized as flexible expansion connectors in order to connect bus bars of switch gears, transformers, generators, etc. Thanks to their elasticity, thermal expansion of bus bars is being compensated. Most of the parts are being used as expansion connectors to prevent damages by vibration caused by switch gear operations. Another part is utilised as flexible components inside parts of machines (Like welding machines or switchgears). These kind of connectors have to realise movement inside machines and switch gears. To manufacture suitable connectors for the variable applications we have different methods of production.

G K ELECTRICALS

DELIVERS QUALITY WORK

Vibration-Dampening Pipe Clamps

Customized Series Pipe Clamps

Range: 0.25 in. (6.2 mm) through 4 in. (102 mm) OD

Pressure: 2,000 psi

Material: SS 304, SS 316

Clamp Material : Polypropylene, Nylon 06, Others on request

Material Standard for Clamp: EN 45545-2 HL3

Clamp Material Source: SABIC (LEXAN XHR6200 Grade)



Standard series pipe clamps can withstand the shock and vibration that a hydraulic system operating at up to 2,000 psi can deliver. Standard hardware is zinc-plated steel, unless otherwise noted. Also available from stock are SS 304 and SS 316 hardware. The standard series is offered in a multitude of configurations, such as weld-mounting, bolt-mounting, rail mounting, stacking, double weld-mounting, and group weld-mounting. Many other options are possible with existing hardware, and custom arrangements are always a welcomed challenge.

Heavy Series Pipe Clamps

Customized Series Pipe Clamps

Range: 0.25 in. (6.3 mm) through 8.625 in. (219 mm)

Pressure: 5,000 to 10,000 psi

Material: SS 304, SS 316

Clamp Material : Polypropylene, Nylon 06, Others on request

Material Standard for Clamp: EN 45545-2 HL3

Clamp Material Source: SABIC (LEXAN XHR6200 Grade)



Heavy series pipe clamps can withstand the shock and vibration that a hydraulic system operating at up to 5,000 psi can deliver. With the use of the Double Heavy design, lines with operating pressure of up to 10,000 psi can be accommodated. Standard hardware material is un-plated carbon steel. Also available from stock are SS 304 and SS 316 hardware. The heavy series can be mounted using a weld plate, rails, and stacking kits. Many other options are possible with existing hardware, and custom arrangements are always a possibility.

Twin Series Pipe Clamps

Customized Series Pipe Clamps

Range: 0.25 in. (6.3 mm) through 1.66 in. (42 mm)

Pressure: 1,500 psi

Material: SS 304, SS 316

Clamp Material : Polypropylene, Nylon 06, Others on request

Material Standard for Clamp: EN 45545-2 HL3

Clamp Material Source: SABIC (LEXAN XHR6200 Grade)



The Twin Series is an excellent choice where multiple lines are required, while keeping a close center distance between the lines. Twin series pipe clamps can withstand the shock and vibration that a hydraulic system operating at up to 1,500 psi can deliver. Twin Series hardware material is zinc-plated steel. Also available from stock are SS 304 and SS 316 hardware. The twin series can be mounted using a weld plate, rails, and stacking kits. Many other options are possible with existing hardware, and custom arrangements are always an option.

Heavy-4 Series Pipe Clamps

Customized Series Pipe Clamps

Range: 8.625 in. (219 mm) through 30 in. (762 mm) OD

Pressure: 5,000 psi to 10,000 psi

Material: SS 304, SS 316

Clamp Material : Polypropylene, Nylon 06, Others on request

Material Standard for Clamp: EN 45545-2 HL3

Clamp Material Source: SABIC (LEXAN XHR6200 Grade)



Heavy-4 Series pipe clamps can withstand the shock and vibration that a hydraulic system operating at up to 5,000 psi can deliver, and with the use of the double heavy design they can accommodate lines with pressures up to 10,000 psi. Standard hardware is a low carbon steel. Also available are SS 304 and SS 316 as well as zinc-plated hardware. The Heavy-4 Series is only offered as a weld-mounted clamp.

Note: We also manufacture clamps as per customer requirements.

G K ELECTRICALS

DELIVERS QUALITY WORK

Pipe Clamps

Material : Polypropylene, Nylon 06, Others on request

Pad Material: SS 304 SS 316

Hexagonal Head Bolt & Nut Material : SS 304

Material Standard for Clamp: EN 45545-2 HL3

Clamp Material Source: SABIC (LEXAN XHR6200 Grade)



- Designed for rail vehicle construction and other applications requiring secure fixation of parallel conduits and cables
- Lightweight and compact design for efficient space utilization
- Allows conduit rotation to prevent torsion and ensure flexibility
- Ensures axial fixation of conduits and cables for enhanced stability
- Quick and easy installation, even with one-hand operation

Standard Pipe Clamps size chart

Part No	Hole Size	No. of Holes	Length	Thickness	Height	Plate Thickness
GKECT-10-1	10	1	39.5	30	24.5	4
GKECT-12-1	12	1	42.5	30	28	4
GKECT-12-2	12	2	61.0	30	28	4
GKECT-12-3	12	3	79.5	30	28	4
GKECT-12-4	12	4	98.0	30	28	4
GKECT-17-1	17	1	48.0	30	33	4
GKECT-17-2	17	2	72.5	30	33	4
GKECT-17-3	17	3	97.0	30	33	4
GKECT-17-4	17	4	121.5	30	33	4
GKECT-23-1	23	1	55.0	30	40	4
GKECT-23-2	23	2	87.0	30	40	4
GKECT-23-3	23	3	119.0	30	40	4
GKECT-23-4	23	4	151.0	30	40	4
GKECT-29-1	29	1	61.0	30	46	4
GKECT-29-2	29	2	99.5	30	46	4
GKECT-29-3	29	3	137.5	30	46	4
GKECT-29-4	29	4	176.0	30	46	4
GKECT-36-1	36	1	70.0	30	55	4
GKECT-36-2	36	2	116.5	30	55	4
GKECT-36-3	36	3	163.0	30	55	4
GKECT-36-4	36	4	209.5	30	55	4
GKECT-48-1	48	1	82.0	30	66	4
GKECT-48-2	48	1	141.0	30	66	4
GKECT-48-3	48	3	199.5	30	66	4
GKECT-48-4	48	4	258.5	30	66	4



- all dimensions in mm

Proven, tested and trusted product in various markets

Recommended for the safe installation of rigid pipes and tubes

Available for all commonly used pipe and tube outside diameters

Environmental protection due to vibration/noise reducing design

Excellent weathering resistance, even under extreme conditions

Note: We also offer customized dimensions.